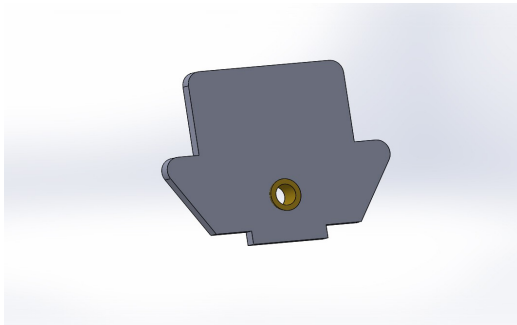
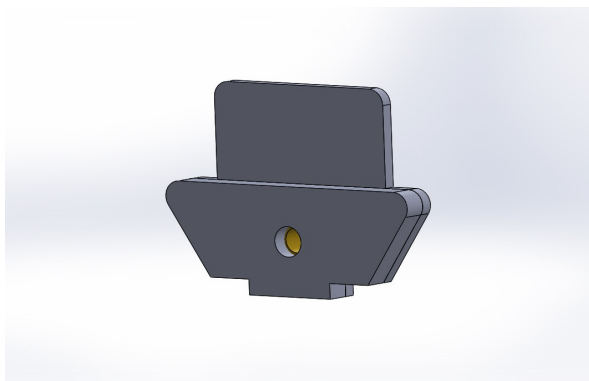


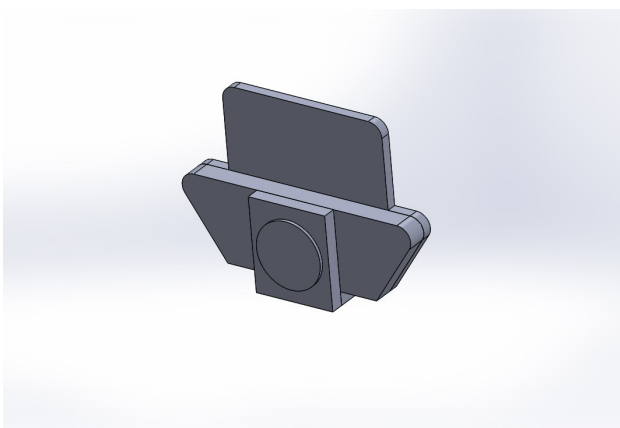
PDF wagon kit



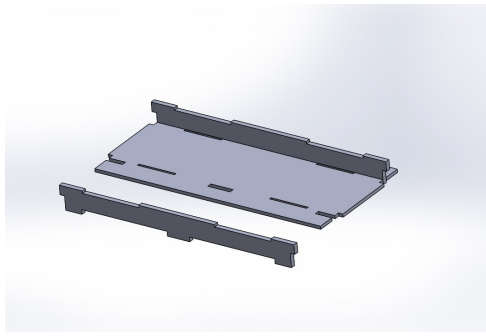
1. Take the axlebox parts glue in the bearings as the pic to all 4



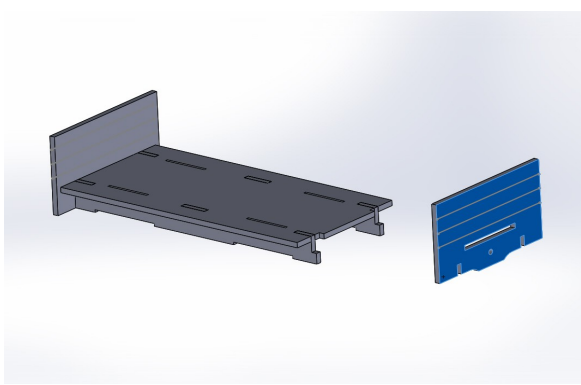
2. next glue on the outer part on all 4



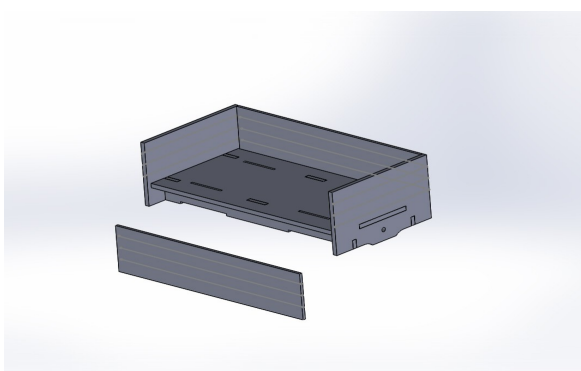
3. next glue on the front of the axlebox when dry paint black and leave to dry.



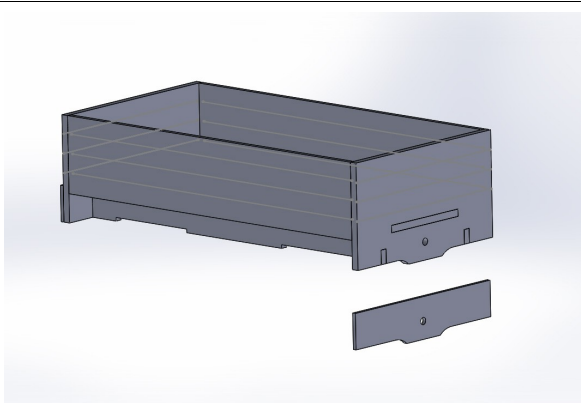
4. Take the floor and glue in the 2 sole bars



5. take the ends and glue in place



6. take the sides and glue in places. This is best done upside down

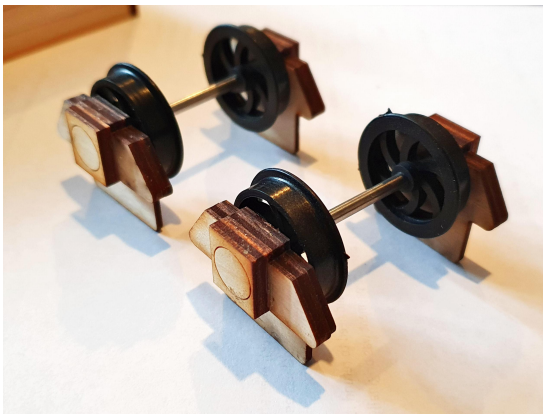


7. take the buffer beams and glue them to each end making sure they line up.

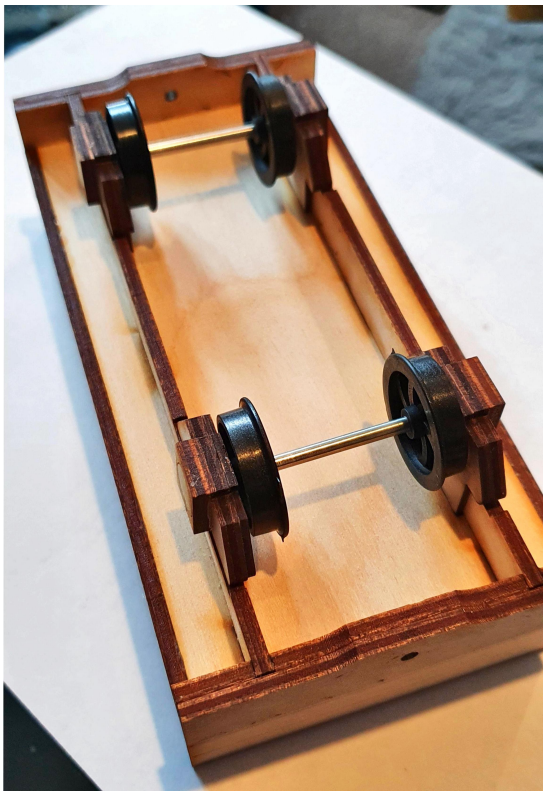
This is the time to paint the model



8. Text glue on the corner straps



9. Take the wheels and push them on to the axles making sure you have 28mm back to back



10. Glue the axleboxes in to the slots making sure they sit flat and wheels turn freely

Fit buffers of your choice.

Happy runing